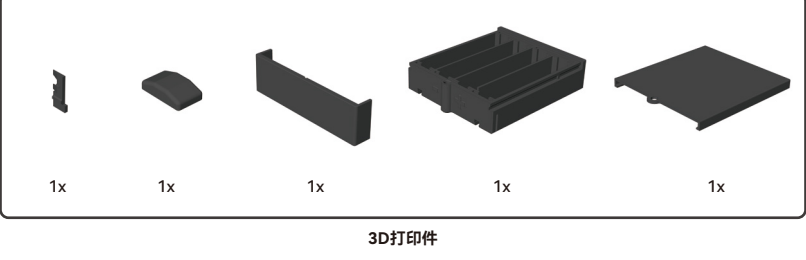
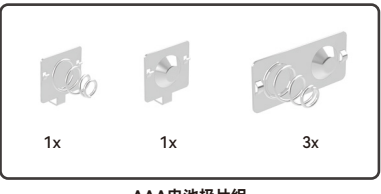
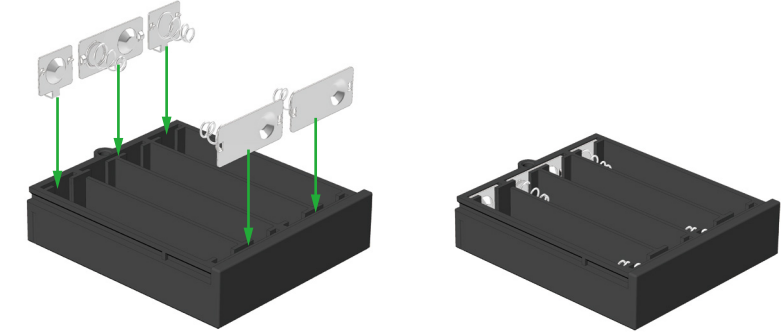


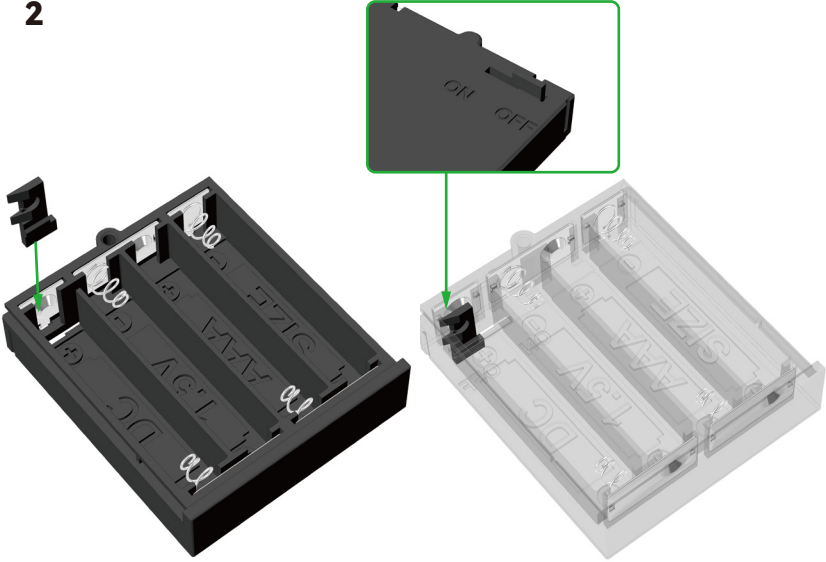
装配说明



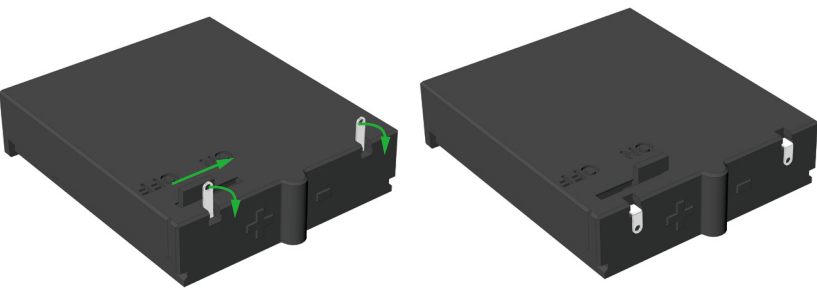
1



2

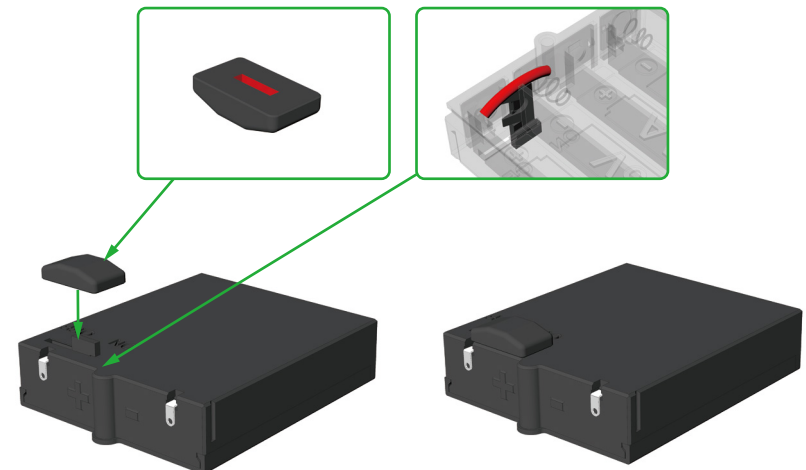


3

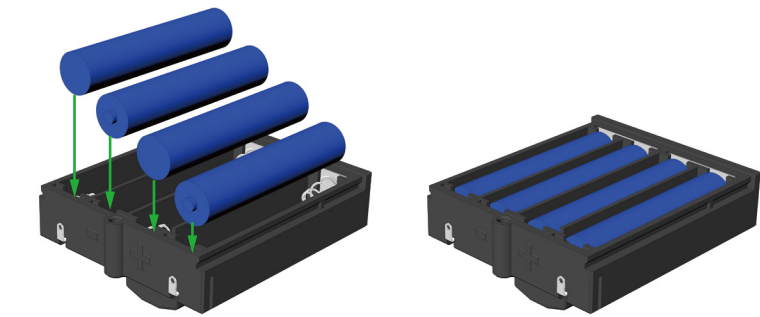


4

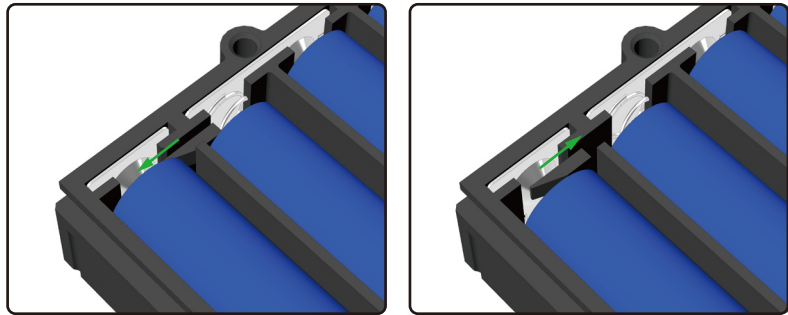
将开关插到插板上。插入前，建议在插槽内点一滴胶水，以防止隔离片可能的倾斜或脱离。安装时建议用一小节耗材抵住隔离板，以避免滑槽可能的破坏风险。如果胶水有些微溢出，推动开关，避免开关与电池盒粘连。



5



6



按照电池盒正负极安装电池，推动开关检查运动是否顺畅

7

